

Pro/ENGINEER

6

5

4

3

2

1

REL NO	LTR NO	NO	REVISION	DRN	CHK	APVD	DATE
ECO-103286	H	1	REDRAWN ON PROE, REVISED NOTES 6 & 7	GAC	JM	NS	02FEB09

NOTES:

1. APPROX. WEIGHT: 165 LBS
MASS: 75 kg
2. DIMENSIONS IN () ARE MILLIMETERS.
3. LUG CAPACITY:
(1 WIRE) WIRE RANGE 16 AWG-300 MCM (16-150 mm) WIRE CU-AL.
GND LUG CAPACITY:
(1 WIRE) WIRE RANGE 14 AWG-1/0 (2.5-50 mm)
CU-AL
4. USE SEPERATE CONDUITS FOR CONTROL WIRING AND POWER WIRING. DO NOT COMBINE.
5. SHADED AREA INDICATES WIRING AND CABLE ENTRANCE AREA DO NOT INSTALL OUTSIDE OF SHADED AREA.
6. WIRING BENDING SPACE CONFORMS TO NATIONAL ELECTRIC CODE (NFPA70).
7. REFER TO THE NATIONAL ELECTRIC CODE FOR MINIMUM CLEAR SPACE IN FRONT OF THIS ENCLOSURE.

D

D

C

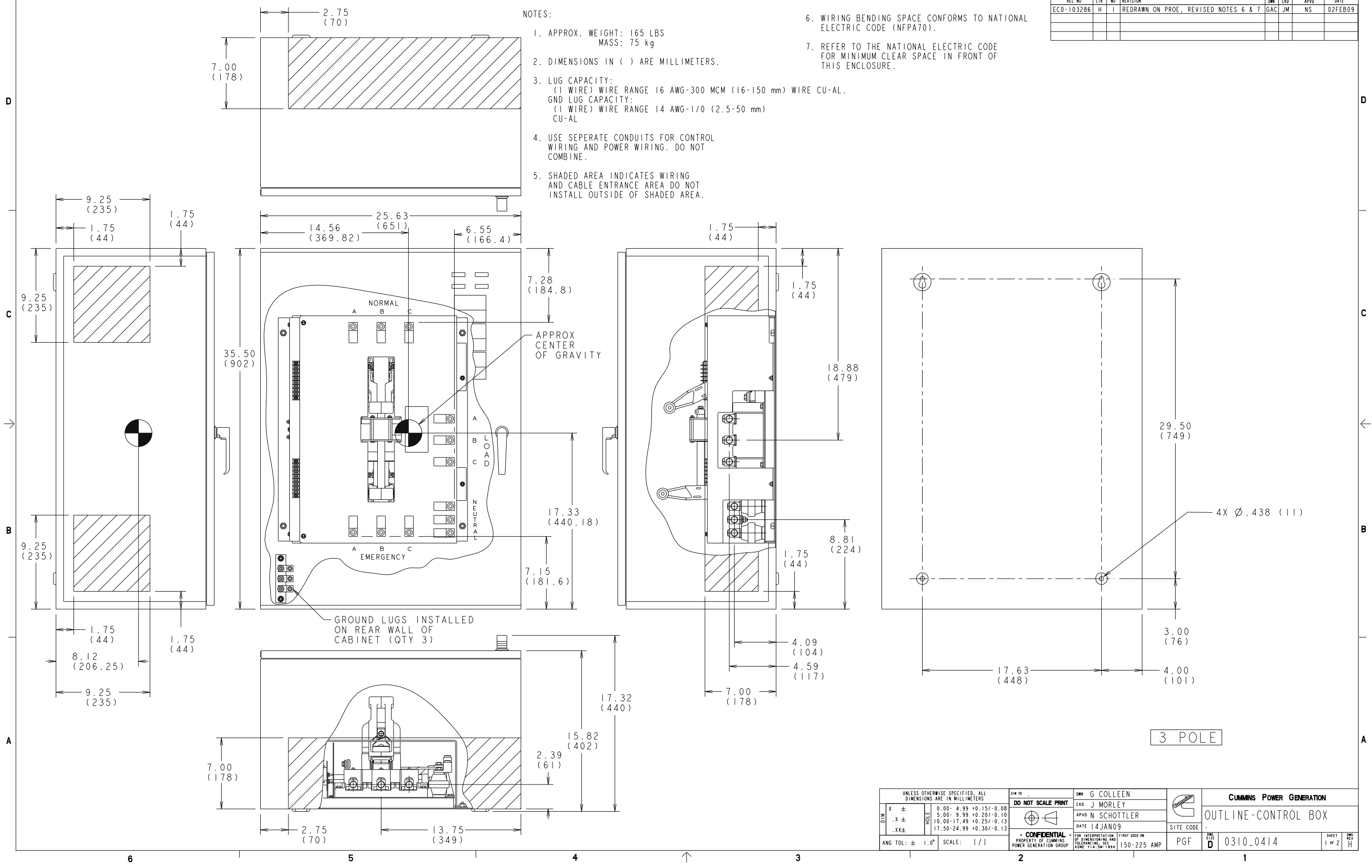
C

B

B

A

A

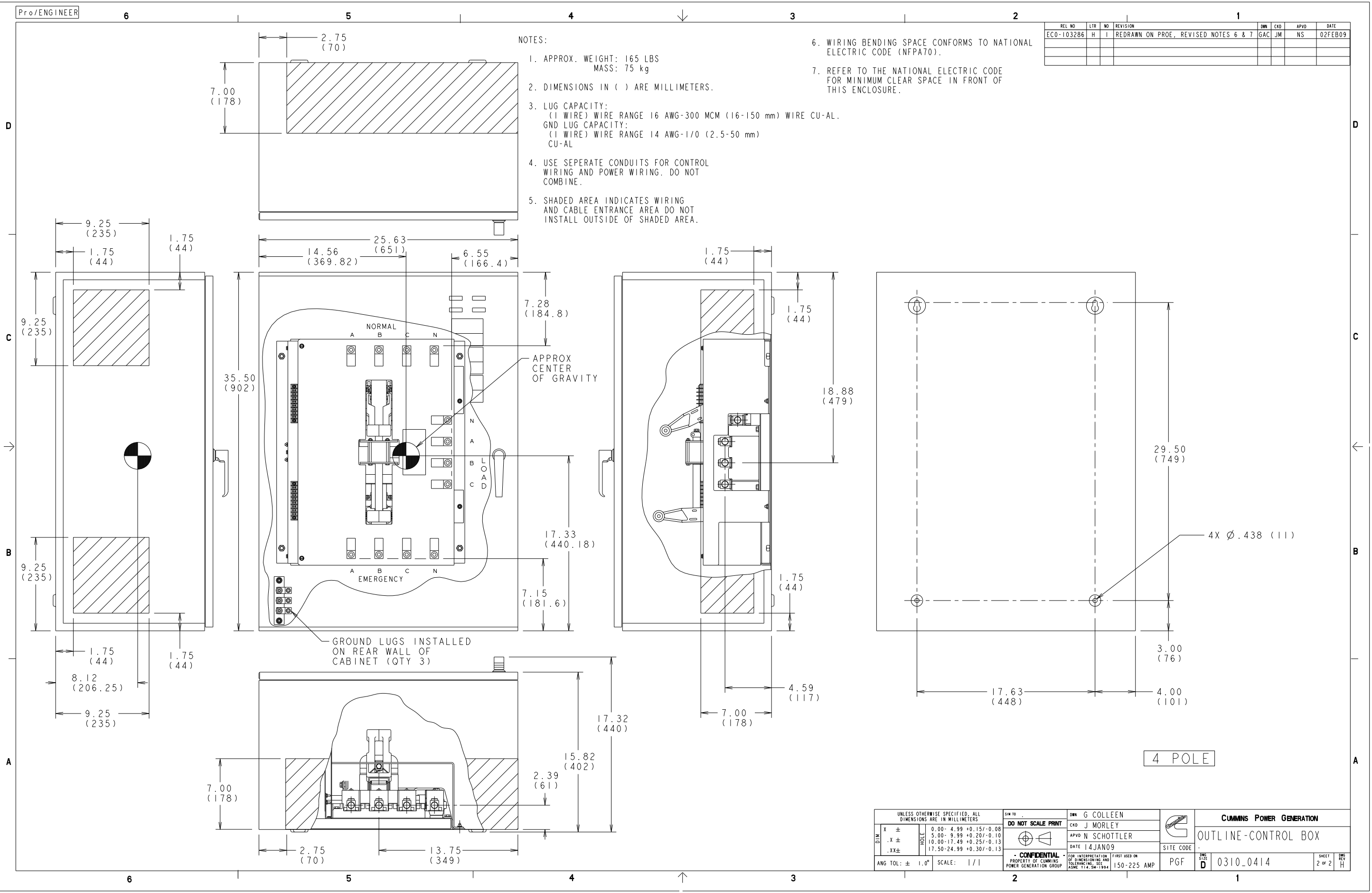


UNLESS OTHERWISE SPECIFIED, ALL DIMENSIONS ARE IN MILLIMETERS		SIM TO		DRN G COLLEEN		CUMMINS POWER GENERATION	
DO NOT SCALE PRINT		CD J MORLEY		OUTLINE-CONTROL BOX		SITE CODE	
DATE 14JAN09		APVD N SCHOTTLER		PGF		0310-0414	
ANG TOL: ± 1.0°		SCALE: 1/1		PROPERTY OF CUMMINS POWER GENERATION GROUP		SHEET 1 OF 2	

REL NO	LTR	NO	REVISION	OWN	CHK	APVD	DATE
ECO-103286	H	1	REDRAWN ON PROE, REVISED NOTES 6 & 7	GAC	JM	NS	02FEB09

NOTES:

1. APPROX. WEIGHT: 165 LBS
MASS: 75 kg
2. DIMENSIONS IN () ARE MILLIMETERS.
3. LUG CAPACITY:
(1 WIRE) WIRE RANGE 16 AWG-300 MCM (16-150 mm) WIRE CU-AL.
GND LUG CAPACITY:
(1 WIRE) WIRE RANGE 14 AWG-1/0 (2.5-50 mm) CU-AL
4. USE SEPERATE CONDUITS FOR CONTROL WIRING AND POWER WIRING. DO NOT COMBINE.
5. SHADED AREA INDICATES WIRING AND CABLE ENTRANCE AREA DO NOT INSTALL OUTSIDE OF SHADED AREA.
6. WIRING BENDING SPACE CONFORMS TO NATIONAL ELECTRIC CODE (NFPA70).
7. REFER TO THE NATIONAL ELECTRIC CODE FOR MINIMUM CLEAR SPACE IN FRONT OF THIS ENCLOSURE.



UNLESS OTHERWISE SPECIFIED, ALL DIMENSIONS ARE IN MILLIMETERS		DWN G COLLEEN		CUMMINS POWER GENERATION	
DO NOT SCALE PRINT		CRD J MORLEY		OUTLINE-CONTROL BOX	
DATE 14JAN09		APVD N SCHOTTLE		SITE CODE	
PROPERTY OF CUMMINS POWER GENERATION GROUP		FIRST USED ON 150-225 AMP		PGF	
SCALE: 1/1		SHEET 2 OF 2		D 0310-0414	

Part A004Y391 H

Description	Legacy Name	External Regulations	Application Status	Release Phase Code	Security Classification	Alternates
OUTLINE,CONTROL BOX	0310-0414	None	Production Only	Production	Proprietary	

Part Specifications :A004Y391 H

Name	Description	Legacy Name
A012T863	DRAWING,INSTALLATION	0310-0414